



Mitochondria= Red



Lysosome= Light blue



Golgi apparatus= Light Yellow



Rough Endoplasmic Reticulum (RER) = Orange + Purple(Ribosomes)



Smooth Endoplasmic Reticulum (SER) = Orange



Nucleolus= Black



Chloroplast= Light Green



Centriole= Pink



Ribosome= Purple



Nucleus= Blue

Plant vs. Animal Cell Organelles Coloring Sheet

Name: _____

Date: _____

Pd: _____

Directions: COLOR the organelles on this side of the worksheet and then color the cells with the assigned COLOR on the other side of the worksheet. Then LABEL one of each kind of organelle in the cells.

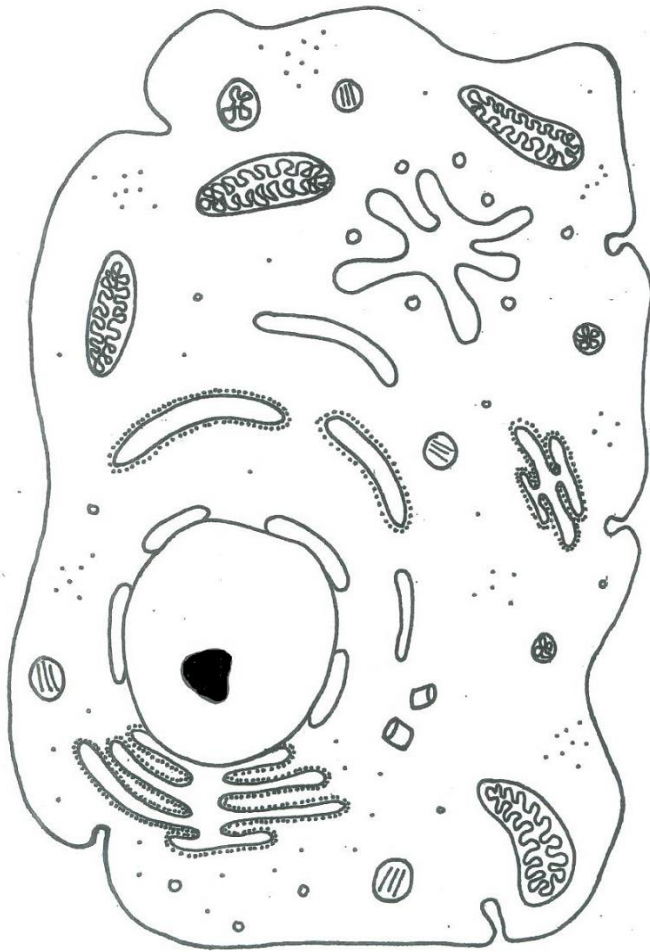
Cell Membrane = Brown

Cell Wall = Dark Green

Cytoplasm = Dark Yellow

Directions: Color the plant and animal cell according to the directions on the other side of this sheet.

Animal Cell



Plant Cell

